

M10 Nut Rivet Adaptor INSTRUCTION MANUAL

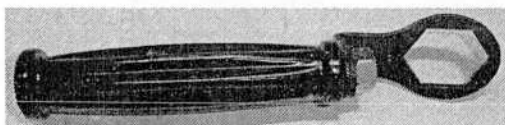
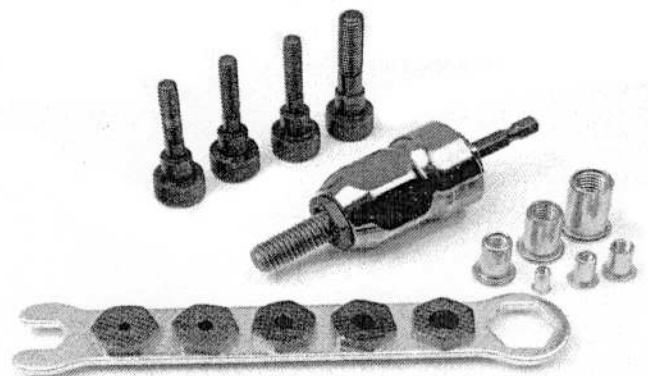


Technical Data

Model No.	SENR-H10F
Dimensions	Dia.31mm x 102mm
Net Weight	0.183Kg= 0.45 lbs
Capacity	M4,M5,M6,M8,M10
Min. Torque Strength:	100N.m. = 73.7 ft/lbs
Recommended drive machine:	14.4V, 18V cordless drill/driver, also reversible electric and pneumatic drill/driver.
	Requesting minimum torque strength 100Nm.

Assembling and Using Before first Use

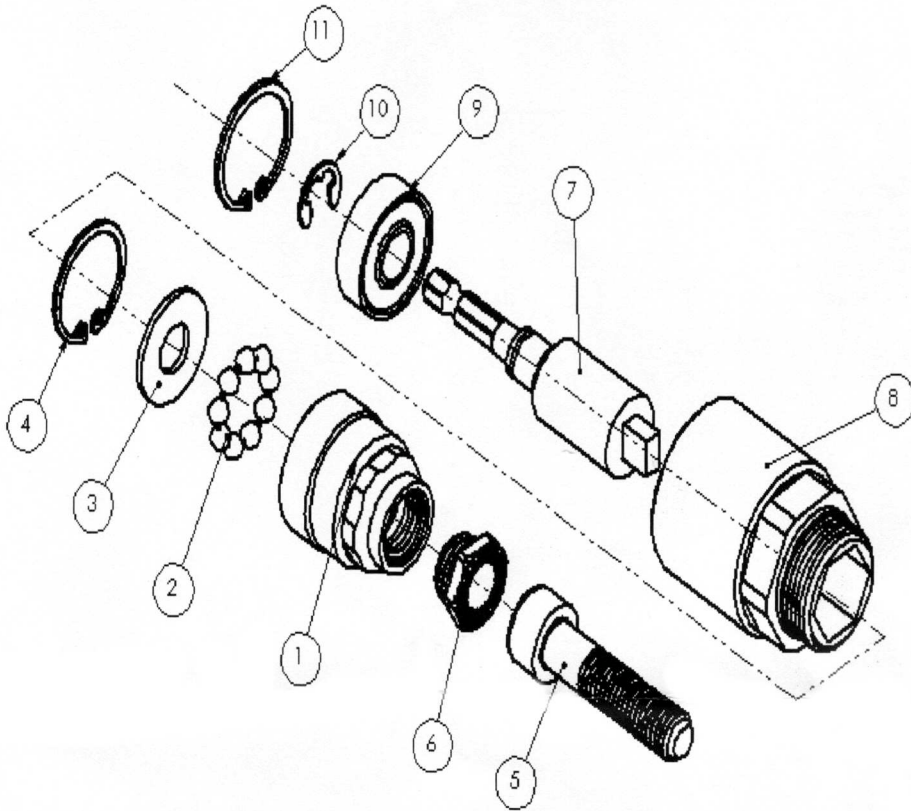
1. Remove the Nut Attachment and the accessory out of the packaging.
2. Keep packaging materials out of reach of children.
3. There is risk of suffocation.



Handle

1	Hex Shank	1/4 (6.35 mm)
2	Housing	Stell Alloy
3	Nosepiece	M4--M5--M6-- M8-- M10
4	Nut Bolt	M4--M5--M6-- M8-- M10
5	Wrench	1PC
6	Handle	1PC

AIRPRO SENR-H10F M10 NUT RIVET GUN ADAPTOR (ALUMINIUM HOUSING)



PART NO.	DESCRIPTION	Q'TY	PART NO.	DESCRIPTION	Q'TY
1	Housing Head	1		Nozzle M6	1
2	Bearing	1		Nozzle M5	1
3	Washer	1		Nozzle M4	1
5	SCREW M10	1	7	Shaft K	1
	SCREW M8	1	8	Tube K	1
	SCREW M6	1	9	Bearing	1
	SCREW M5	1	10	E7	1
	SCREW M4	1	11	R26	1
6	Nozzle M10	1			
	Nozzle M8	1			